



REMEMBER:

Before installing or adjusting your sights, unload and/or check to ensure the firearm is unloaded.
WARNING: Use of a sight press for installation is not recommended as it can cause damage to sights/slide.

Dovetail Front Sight

Needed Tools: non-marring punch (brass, delrin, or nylon), Q-tips, fine file or emery paper, vise, alcohol

1. Place the gun in a padded vise.
2. Drive out the existing sight using a brass or steel punch.
3. Clean the factory dovetail until smooth (Q-tip, toothbrush, file as necessary).
4. Slide the sight into the dovetail. Entry side does not matter; test both sides to find the best fit. If it goes in at least half way, or loosely slides through, skip to 7. **Friction fit is not necessary.**
5. Using a fine file or emery paper on a flat surface, remove steel from the bottom of the Express Sight until it will enter the dovetail halfway. (See Figure 1) Do not file the dovetail (A) shorter than the depth (B) noted in Figure 2. If the sight still does not fit, but you have reached the minimum height, move to step 6; otherwise, skip to step 7.

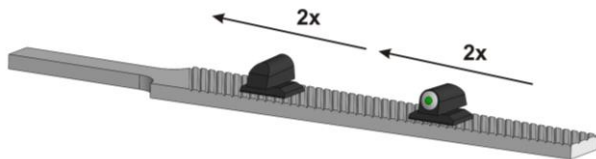
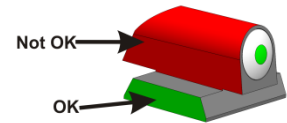


Figure 1

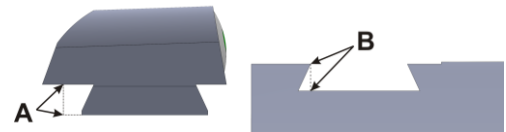
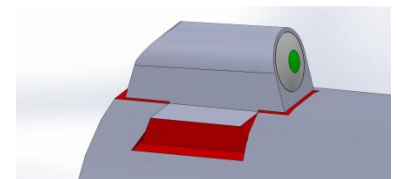


Figure 2

6. Using an angled dovetail file, file on the angled faces of the dovetailed portion of the sight until the sight enters halfway. (file info should be a footnote)
 - a. 65° 1911 Dovetail Type Slot Straight Base file 080-648-265WB
 - b. 60° Dovetail Slot sight base file 080-648-260WB
7. Remove the sight. Degrease the slot and the sight.
8. Apply red threadlocking compound to all mating surfaces.

**Red threadlocker is a necessary component of our sight installation process - sights can fall off without the use of red threadlocker.*
9. Install the sight using a non-marring punch.
10. Let sit for 10 minutes, and then lightly remove the excess clumps of red threadlocking compound with a Q-tip. In this initial clean-up, do not clean aggressively, as you will remove the compound from the joint. Let it set for 3 hours.





Rifle & Shotgun Express Rear Sight for Remington

1. Loosen the windage screw on the top of the sight and remove the factory rear sight.
2. Install the Express rear sight and reinstall the windage screw
3. To adjust windage, loosen the windage screw and move the sight in the same direction as you want the bullet Point of Impact (POI) to move. Retighten the windage screw
4. To adjust elevation, loosen the elevation screw and move the rear sight in the same direction as you want the bullet POI to move. Retighten the windage screw. After zeroing to your satisfaction, we recommend using a small amount of red threadlocker on the mating surfaces of the sight to ensure that it will stay in place.