



REMEMBER:

Before installing or adjusting your sights, unload and/or check to ensure the firearm is unloaded.
WARNING: Use of a sight press for installation is not recommended as it can cause damage to sights/slide.

Dovetail Front Sight

Needed Tools: non-marring punch (brass, delrin, or nylon), Q-tips, fine file or emery paper, vise, alcohol

1. Place the slide in a padded vise.
2. Drive out the existing sight using a brass or steel punch.
3. Clean the factory dovetail until smooth (Q-tip, toothbrush, file as necessary).
4. Slide the sight into the dovetail. Entry side does not matter; test both sides to find the best fit. If it goes in at least half way, or loosely slides through, skip to 7. **Friction fit is not necessary.**
5. Using a fine file or emery paper on a flat surface, remove steel from the bottom of the Express Sight until it will enter the dovetail halfway. (See Figure 1) Do not file the dovetail (A) shorter than the depth (B) noted in Figure 2. If the sight still does not fit, but you have reached the minimum height, move to step 6; otherwise, skip to step 7.

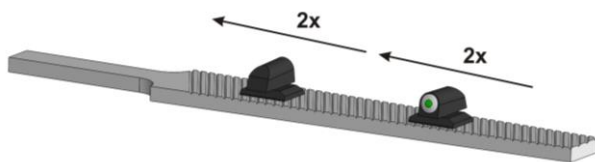
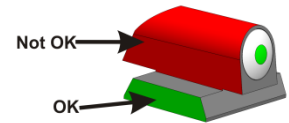


Figure 1

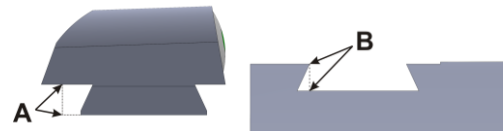
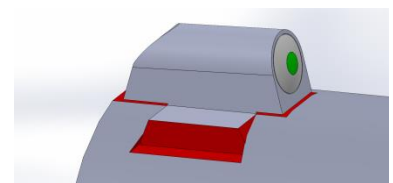


Figure 2

6. Using an angled dovetail file, file on the angled faces of the dovetailed portion of the sight until the sight enters halfway. (file info should be a footnote)
 - a. 65° 1911 Dovetail Type Slot Straight Base file 080-648-265WB
 - b. 60° Dovetail Slot sight base file 080-648-260WB
7. Remove the sight. Degrease the slot and the sight.
8. Apply red threadlocking compound to all mating surfaces.
**Red threadlocker is a necessary component of our sight installation process - sights can fall off without the use of red threadlocker.*
9. Install the sight using a non-marring punch.
10. Let sit for 10 minutes, and then lightly remove the excess clumps of red threadlocking compound with a Q-tip. In this initial clean-up, do not clean aggressively, as you will remove the compound from the joint. Let it set for 3 hours.
11. Wipe sights down with protective oil in a light coating to prevent potential rust issues.





M&P 9EZ Rear Sight

1. Look on the bottom of the slide under the rear sight area and you will see an Allen head screw. This screw is used to not only hold the rear sight in place, but also to allow the shooter to adjust the rear sight for windage.
2. Remove this screw and keep it as it will be used in the installation of the XS rear sight.
3. With the screw removed the rear sight should slide out of its dovetail slot.
4. Clean and degrease both the dovetail slot and the XS rear sight.
5. The XS rear sight should readily slip into the dovetail slot. If it does not, then minor filing on the bottom of the rear sight will soon allow it to slip into the slot.
6. Re-install the factory locking screw and tighten after centering the rear sight.
7. Once the front sight Loctite has cured then you should test shoot and adjust the windage of the rear sight as needed.
8. Once you are satisfied with the windage position of the rear sight you should apply some Loctite under the rear tail of the sight and allow it to flow in. Wipe off the excess from the surface of the slide and set aside for 2 hours to allow the Loctite to cure.
9. Wipe sights down with protective oil in a light coating to prevent potential rust issues.