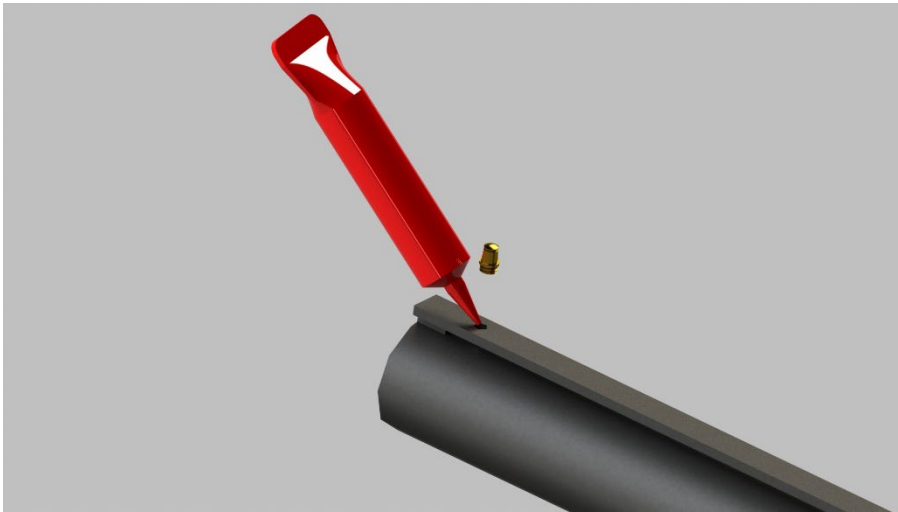


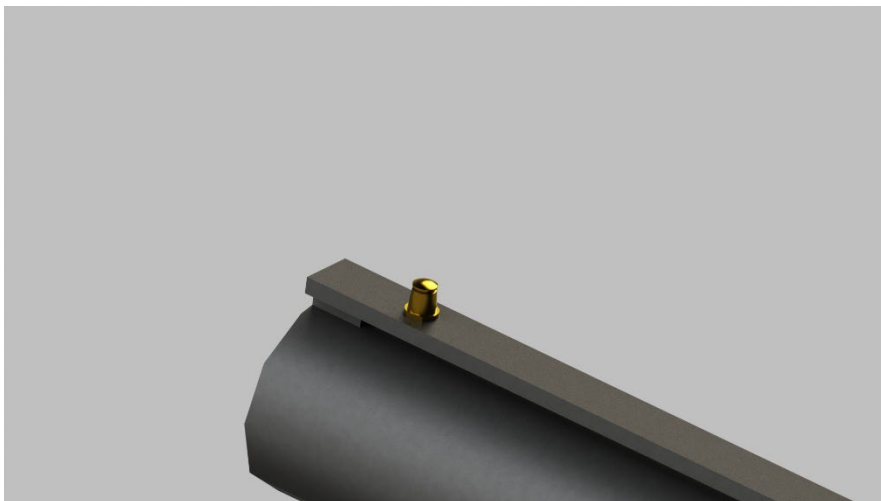


## Shotgun Bead Replacement Instructions

1. Ensure the firearm is unloaded.
2. Remove Factory Bead by unscrewing it.
3. Apply thread locker to new brass post threads.

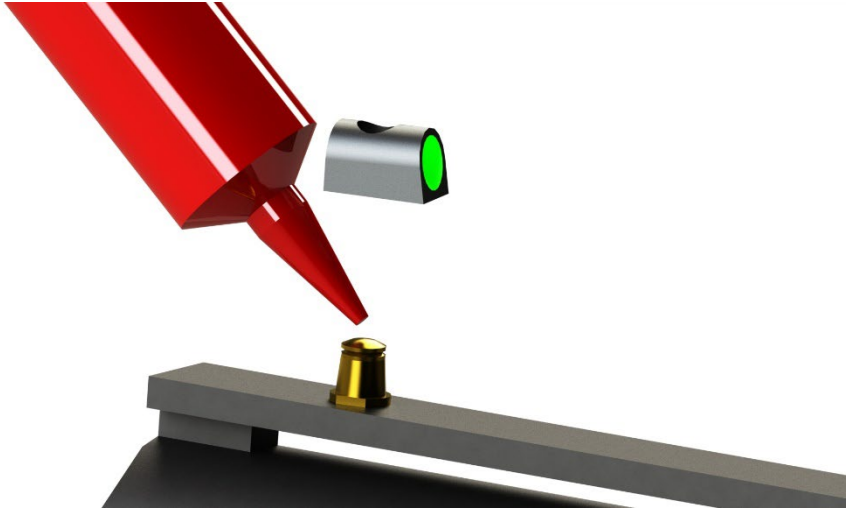


4. Screw post into vent rib.

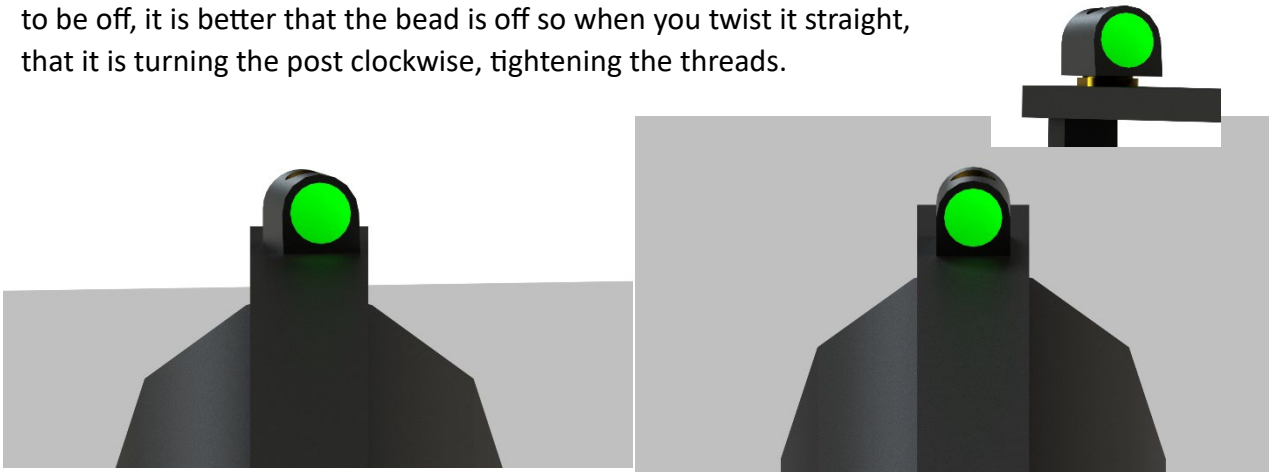


5. Apply thread locker to the side walls of the post.

Contact us: [tech@xssights.com](mailto:tech@xssights.com)



6. Install bead over post.
7. Ensure the bead is straight using the vent rib as a guide. If you are going to be off, it is better that the bead is off so when you twist it straight, that it is turning the post clockwise, tightening the threads.



8. Strike the top of bead to seat it onto the post– Excessive force is not needed.
  - a. Recommend locking gun or barrel into a vise so it is held securely.
  - b. Recommend Gunsmith hammer and a wooden or plastic block/large dowel, placing the block/dowel, atop the bead so when struck, the bead is not damaged.



Contact us: [tech@xssights.com](mailto:tech@xssights.com)